

We have expanded our product line to include

# *TM-6 Formers*

Listen. Improve. Serve.

CALL  
TODAY

920-458-8008



- PanelView 800 7-inch touch screen
- 10 horse power drive motor
- Stainless steel hydraulic tank
- Off-the-shelf Allen Bradley components and controls
- Custom design program with user friendly maintenance screens
- Papers product up to 65 strokes per minute while electronically counting and stacking your patties from 1 to 16 portions per stack, up to 5.5" [140mm] high

**TOMAHAWK**  
MANUFACTURING INC.  
1204 Pilgrim Road, Plymouth WI 53073

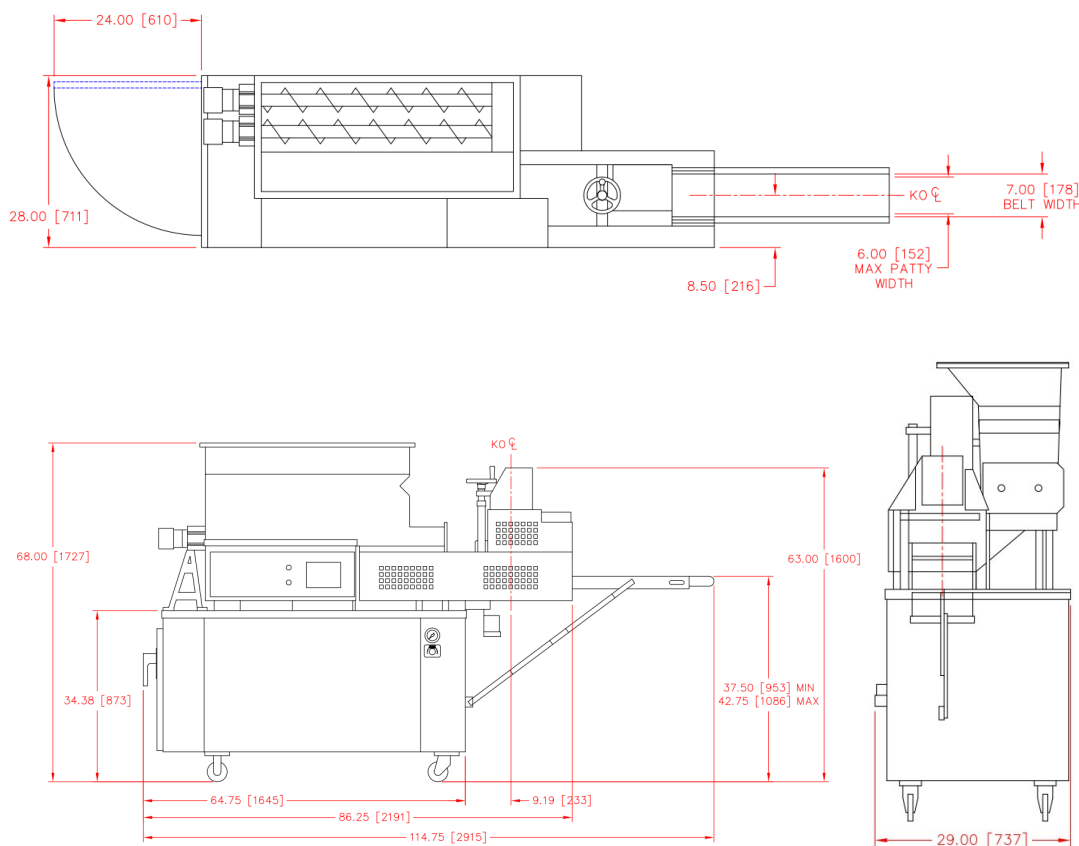
920-458-8008  
[www.tomahawkmfg.com](http://www.tomahawkmfg.com)  
1204 Pilgrim Rd.  
Plymouth, WI 53073

# TM-6 Formers

Listen. Improve. Serve.

CALL  
TODAY

920-458-8008



Introducing the newest former to the Tomahawk line up; the TM-6 is a smaller size forming machine capable of producing a wide range of value-added products. Our K.O. housing is made of a one piece billet instead of casting, to increase the life of the part. Tomahawk engineers have improved other designs such as etched guards, quick disconcert prox cables, and an independent vacuum pump motor from our drive motor. Our formers are equipped with Allen Bradley controls, that feature maintenance-friendly programs. The TM-6 combines the latest technology with a full 6"X6" (152mm X 152mm) of usable-space helping to increase your productivity for a higher product output.

**TOMAHAWK**  
MANUFACTURING INC.  
1204 Pilgrim Road, Plymouth WI 53073

920-458-8008  
[www.tomahawkmfg.com](http://www.tomahawkmfg.com)  
1204 Pilgrim Rd.  
Plymouth, WI 53073