

We have expanded our product line to include

TM-26 Formers

Listen. Improve. Serve.

**CALL
TODAY**

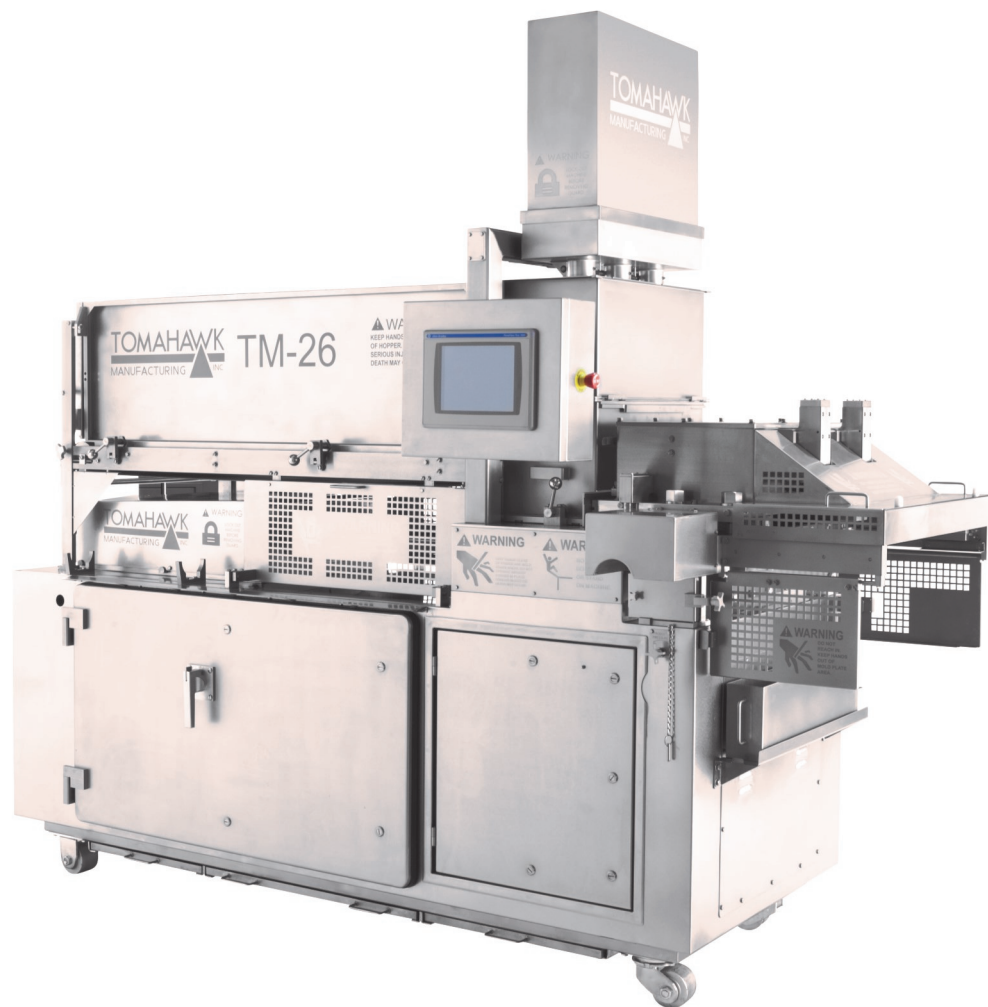
920-458-8008

New TM-26 Formers

**Standard Fill 9"
Softfill 9"
With Paper
Multi Flow 10"**

TM-26 Kit Machines

**Standard Fill 9"
Softfill 9"
Standard Fill 10"
Softfill 10"
Multi Flow 10'
With Paper
Allen Bradley Control
System**



- **Heavy duty reinforced frame**
- **All NEMA frame doors with heavy duty cam locks**
- **15 horse power drive motor**
- **2 pc. hopper front**
- **Stainless steel hydraulic tank**
- **Newest version of Allen Bradley controls**
- **Custom design program with user friendly maintenance screens**

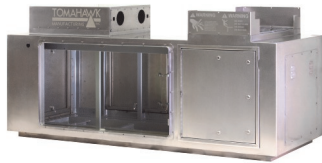
TOMAHAWK
MANUFACTURING INC.
1204 Pilgrim Road, Plymouth WI 53073

920-458-8008
www.tomahawkmfg.com
1204 Pilgrim Rd.
Plymouth, WI 53073

TM-26 Formers

Listen. Improve. Serve.

CALL
TODAY
920-458-8008



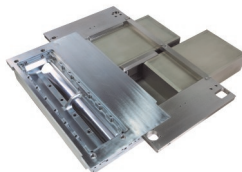
- Heavy duty reinforced frame
- All NEMA frame doors with heavy duty cam locks
- Logos and safety warnings are all laser etched (no stickers)
- New easy-to-open plunger cylinder guard



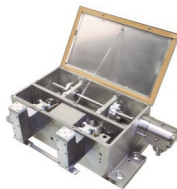
- Stainless steel tank
- Higher GPM pumps
- Higher capacity heat exchanger increases longevity of hydraulic components



- Heavier gauge auger flighting and 1/8" gauge material for front hopper improves longevity
- Utilizes heavier gauge materials for feed screw frame support
- Manufactured from solid billet of aluminum vs. casting
- Improved fastening design with longer thread bolts for mounting
- Gasket sealing design to decrease leakage



- Vacuum is eliminated as the plunger is returned with Tomahawk's 26" Anti-leak Pump Box Window
- The Anti-Leak Pump Box upgrade can be retrofit on various OEM 26" formers.



- Mold cover is completely stainless steel, not traditional plated steel.
- Rebuildable right angle drive made of stainless steel eliminating the need for a cover. Will look great for years to come.



- Using double enveloping gears will double your OEM reducer's life!
- Double enveloping gears provide two to four times the tooth drive contact over OEM's single enveloping designs
- Reducer housing is vented and comes with a fan to improve cooling, this means lower oil temperature and improved lubrication performance
- We are so confident the replacement reducer will provide double the life of your OEM unit we guarantee it!



- With our patented Multi-Flow technology, you get more pieces per stroke, yet the machine works no harder.

TOMAHAWK
MANUFACTURING INC.
1204 Pilgrim Road, Plymouth WI 53073

920-458-8008
www.tomahawkmfg.com
1204 Pilgrim Rd.
Plymouth, WI 53073